

Tow Bar Adaptors for ROADMASTER Products

ALL SPECIFICATIONS ARE SUBJECT TO CHANGE WITHOUT NOTICE

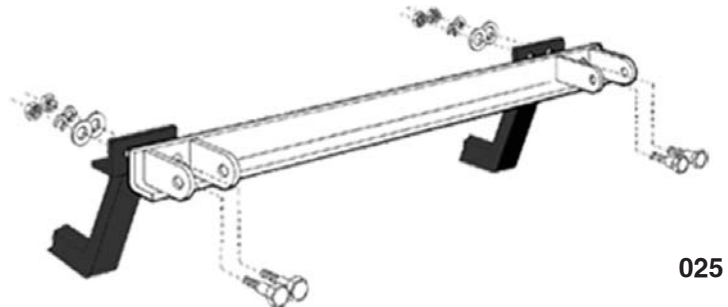
ROADMASTER, Inc. 6110 NE 127th Ave. Vancouver, WA 98682 1-800-669-9690 fax 360-735-9300 www.roadmasterinc.com

To adapt other manufacturers' tow bars to ROADMASTER brackets...

...attach the appropriate adaptor using the hardware as shown below.

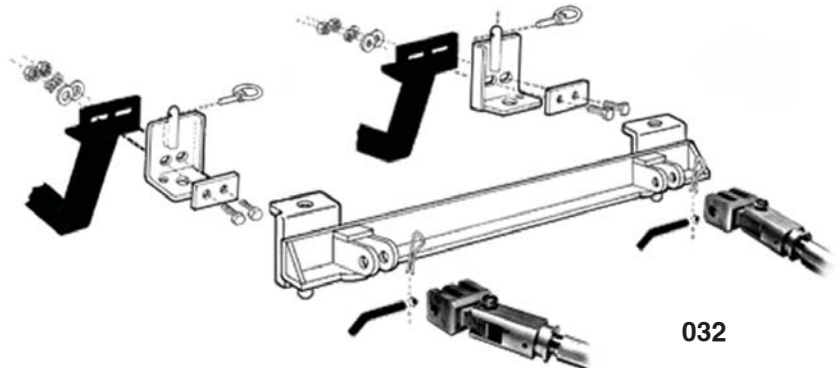
The **025** adapts Reese, Valley, Eaz-Lift and Draw-Tite car-mounted tow bars to ROADMASTER brackets.

Note: this adaptor does not fit MX or MS series brackets. Also, if you plan to use any ROADMASTER brackets with removable front arms, you will need quick-disconnects in addition to the adaptor.



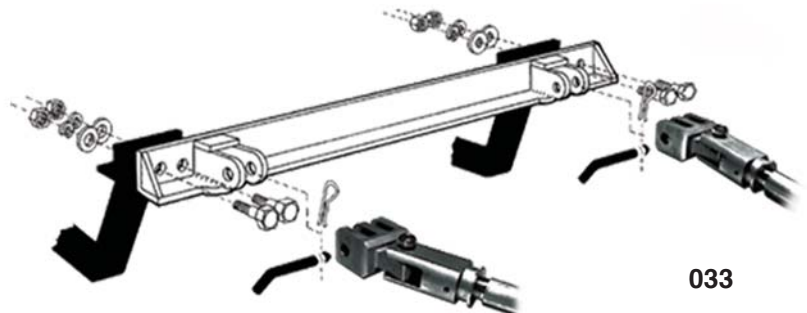
The **032** adapts motorhome-mounted Blue Ox tow bars (Aventa, Aventa II, Kar Bar, Aladdin, Alexxa, Acclaim) as well as Blue Ox "A frame" tow bars with one or three-pronged attachments to ROADMASTER brackets. They also adapt Demco Aluminator, Excalibar, Kwik-Tow and Dominator tow bars to ROADMASTER brackets.

Note: this adaptor does not fit MX or MS series brackets.



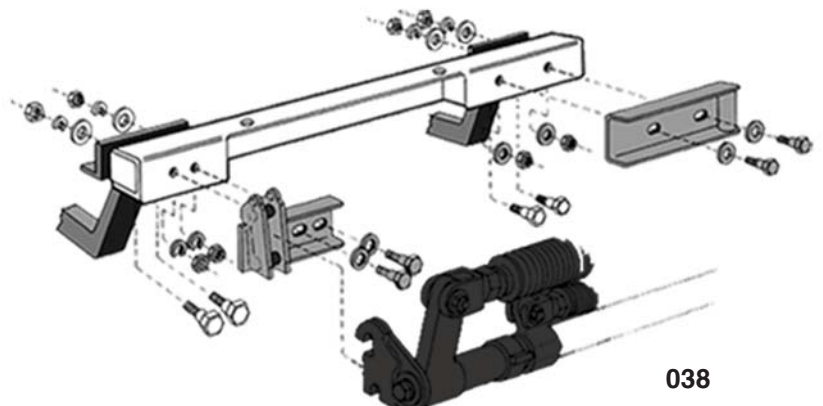
The **033** has the same adaptability as the **032** except that this adaptor is permanently bolted to the mounting bracket.

Note: this adaptor does not fit MX or MS series brackets. Also, if you plan to use any ROADMASTER brackets with removable front arms, you will need quick-disconnects in addition to the adaptor.



The **038** adapts Duncan Towmatic II, Karbar and EazAligner 2000 car-mounted tow bars to ROADMASTER brackets.

Note: this adaptor does not fit MX or MS series brackets. Also, if you plan to use any ROADMASTER brackets with removable front arms, you will need quick-disconnects in addition to the adaptor.



Tow Bar Adaptors for ROADMASTER Products

ALL SPECIFICATIONS ARE SUBJECT TO CHANGE WITHOUT NOTICE

ROADMASTER, Inc. 6110 NE 127th Ave. Vancouver, WA 98682 1-800-669-9690 fax 360-735-9300 www.roadmasterinc.com

To adapt ROADMASTER tow bars to other manufacturers' brackets...

...attach the appropriate adaptor using the hardware as shown below.

The **031** adapts ROADMASTER Falcon, BlackHawk, BlackHawk All Terrain and Falcon All Terrain tow bars to Blue Ox baseplates. Also adapts Sterling tow bars (with serial numbers up to 14,500) to Blue Ox baseplates.



031

The **031-5** adapts all ROADMASTER Sterling tow bars (with serial numbers above 14,501) to Blue Ox baseplates.



031-5

The **034** adapts all ROADMASTER Falcon, BlackHawk All Terrain and Falcon All Terrain tow bars to Demco baseplates. Also adapts Sterling (with serial numbers up to 14,500) to Demco baseplates.



034

The **034-5** adapts all ROADMASTER Sterling tow bars (with serial numbers above 14,501) to Demco baseplates.



034-5



Towing and Suspension Solutions